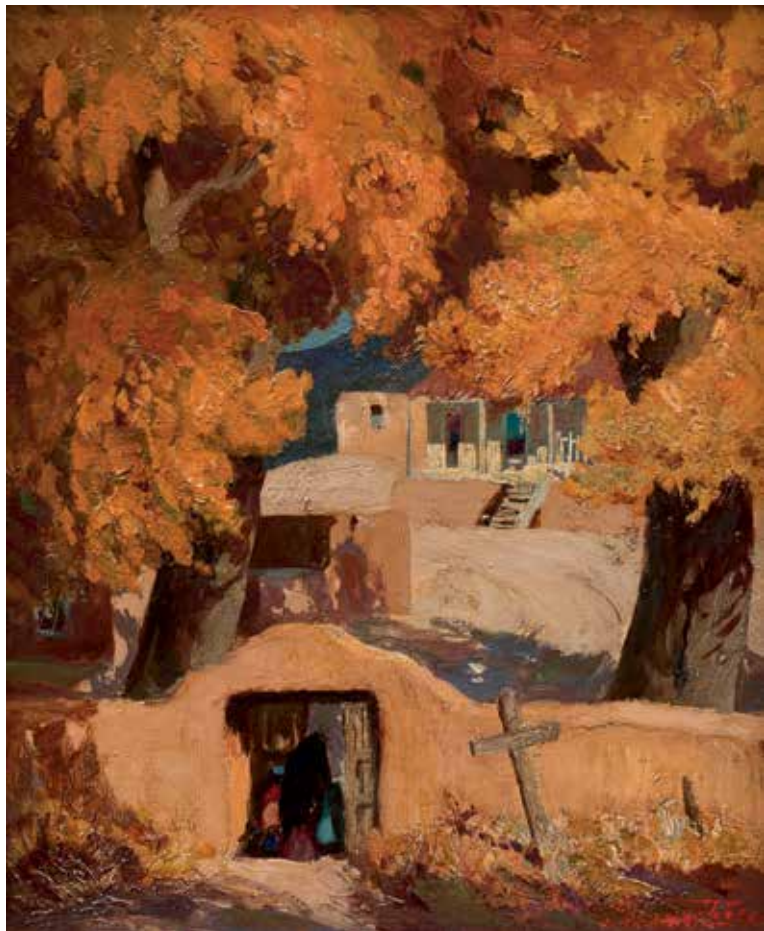


# THE OWINGS GALLERY



*holiday selections* | WINTER 2013



Fremont Ellis (1897-1985) *Gate at Chimayo*, oil on board, 20 x 16 inches



Howard Schleeter (1903-1976) *Old Cemetery*, d.1959, mixed media on paper, 18 x 22 inches



Doel Reed (1895-1985) *Llano*  
oil on canvas, 24 x 40 inches





Gunnar Widforss (1879-1934) *Lone Pine - Grand Canyon*, watercolor on paper, 11 3/4 x 13 5/8 inches



Carl O. Borg (1879-1947) *Grand Canyon National Park*, d.1924  
oil on canvas, 33 x 45 inches





Marsden Hartley (1877- 1943)  
*New Mexico Landscape*  
c. 1919 - 1923  
oil on canvas  
17 5/8 x 30 1/8 inches



Joseph H. Sharp (1859-1953) *Cheyenne Camp, Little Big Horn, Montana*, d.1906  
oil on canvas, 12 3/4 x 18 3/4 inches



Oscar Berninghaus (1874-1952) *Scouting for the Hunt - Taos Valley*, c.1924  
oil on canvas, 25 1/4 x 30 1/8 inches





Walter Ufer (1876-1936) *Cottonwoods and Wild Horses, Taos Mountain*, c.1925  
oil on canvas, 25 x 30 inches



Oscar Berninghaus (1874-1952) *Ranchitos, Hacienda*, c.1926  
oil on board, 10 1/2 x 13 3/8 inches





Gerard C. Delano (1890-1972) *Red Sky*, oil on canvas, 16 x 20 inches  
*Sunset Silhouette*, oil on masonite, 19 1/4 x 23 3/8 inches (opposite)



Fremont Ellis (1897-1985)  
*The Passing Storm - Glorieta*, d.1928  
oil on canvas, 30 x 40 inches







William P. Henderson (1877-1943) *Abandoned Ranch*, watercolor on paper, 6 1/4 x 9 inches



William P. Henderson (1877-1943) *A Spring Morning at the Lucero House*, oil on board, 17 1/2 x 23 1/2 inches

Andrew Dasburg (1887-1979)  
*Ranchos de Taos*, c.1959  
oil on board, 23 1/4 x 34 1/4 inches







Howard Schleeter (1903-1976) *Hazy Sun*, d.1961  
oil on masonite, 22 1/8 x 28 1/8 inches



Arthur G. Dove (1880-1946) *Freight Car II*, d.1938  
watercolor and ink on paper, 5 x 7 inches



Rebecca S. James (1891-1968) *Shell for Cady*, d. September 25 1937  
reverse oil on glass, 2 x 3 inches



Howard Schleeter (1903-1976) *Bay Birds*, d. 1966  
oil on masonite, 17 3/8 x 23 3/8 inches





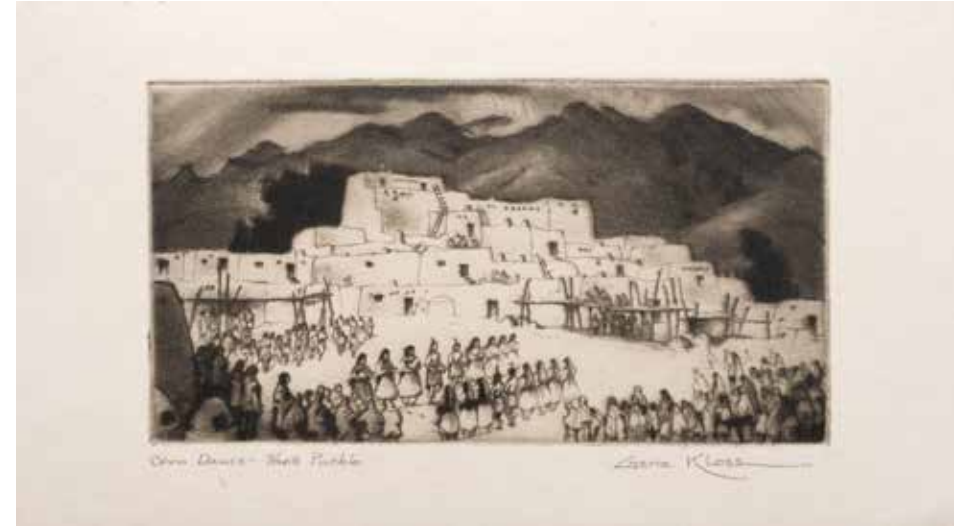
Gene Kloss (1903-1996) *Christmas Eve - Taos Pueblo*, d.1946  
drypoint and aquatint, 12 1/2 x 15 1/2 inches



Gustave Baumann (1881-1971) *Wild Horse Mesa*  
color woodblock print, 12 1/2 x 15 1/2 inches

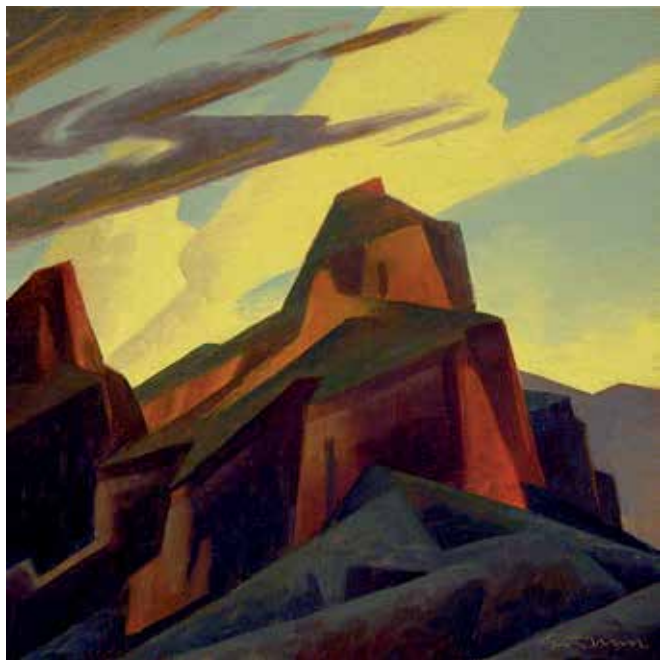


Thomas Moran (1837-1926) *Hopi House - Grand Canyon, Arizona*, d.1905  
watercolor on paper, 7 5/8 x 11 3/8 inches



Gene Kloss (1903-1996) *Corn Dance - Taos Pueblo*, d.1943  
etching, 3 1/4 x 5 5/8 inches

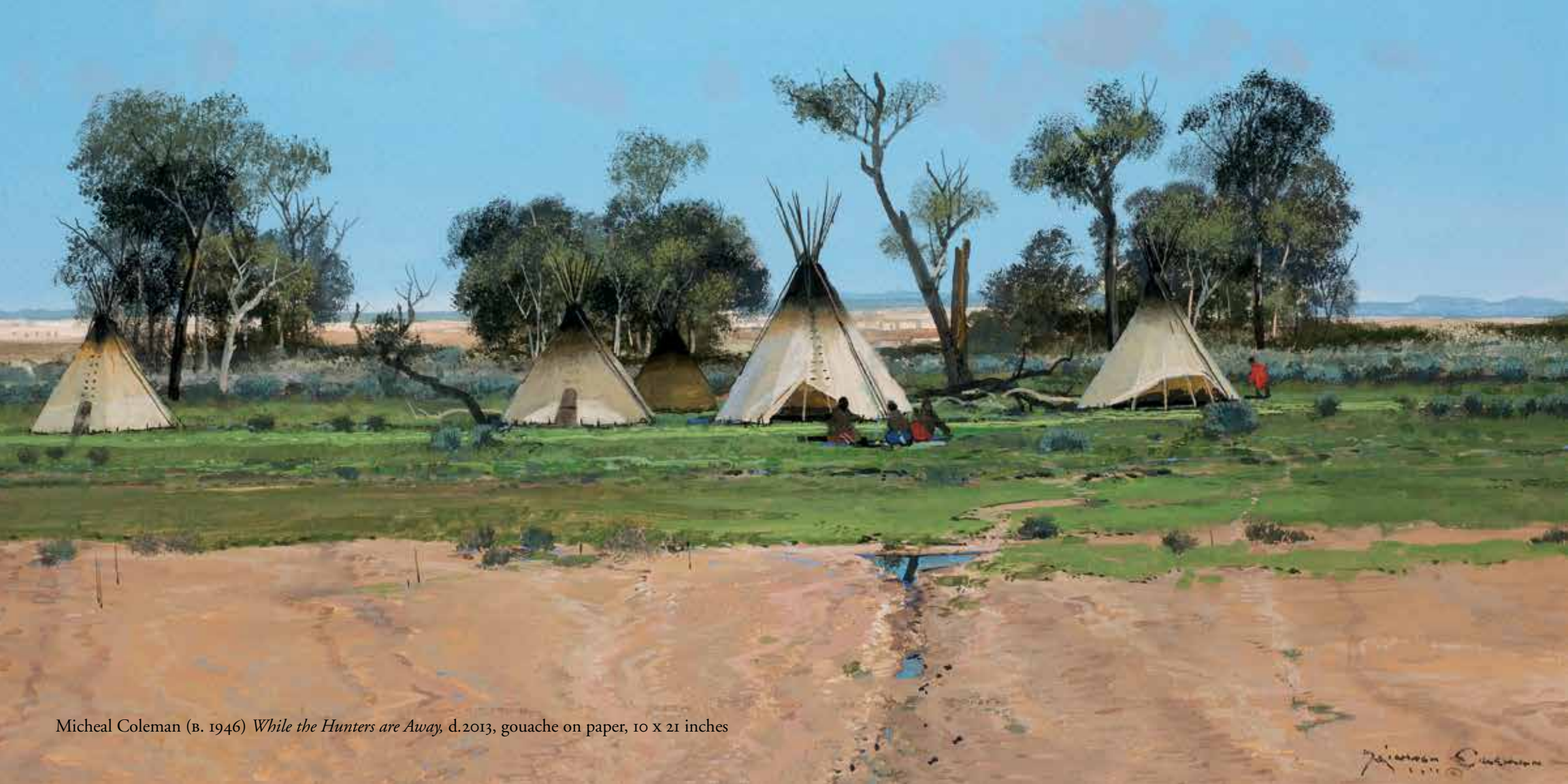




Ed Mell (b. 1942) *Rock Uplift*, d.2013, oil on linen on board, 10 x 10 inches



Ed Mell (b. 1942) *Sidestepper*, d.2013  
bronze, number 1 of 12, 24 x 20 1/2 x 18 1/2 inches



Micheal Coleman (b. 1946) *While the Hunters are Away*, d.2013, gouache on paper, 10 x 21 inches

Micheal Coleman  
2013



This catalogue was published to accompany the exhibition:

*holiday selections* 2013

December 20, 2013 through January 24, 2014

THE OWINGS GALLERY

120 East Marcy Street, Santa Fe, New Mexico 87501

Telephone: 505.982.6244

Fax: 505.983.4215

Web: [www.owingsgallery.com](http://www.owingsgallery.com)

Email: [info@owingsgallery.com](mailto:info@owingsgallery.com)

Publication © 2013 THE OWINGS GALLERY

All rights reserved. No part of this catalogue may be reproduced without the written permission of THE OWINGS GALLERY

Catalogue Design: Laura C. Widmar, Santa Fe, New Mexico

Photography: James Hart, Santa Fe, New Mexico

On the Cover: Andrew Dasburg (1887-1979) *Ranchos de Taos*, c.1959  
Oil on board, 23 1/4 x 34 1/4 inches

Frontispiece: Anna Neagoe (1894-1986) *Cubist Still Life* c. 1950  
Oil on canvas, 18 x 21 1/2 inches (detail)

3000 copies